

DECOTATOO®

*Keep Your Life Creative!*

- EVO -  
STUDIO



*Signature by*  
**PAUL OCCHIPINTI**  
MEILLEUR OUVRIER DE FRANCE



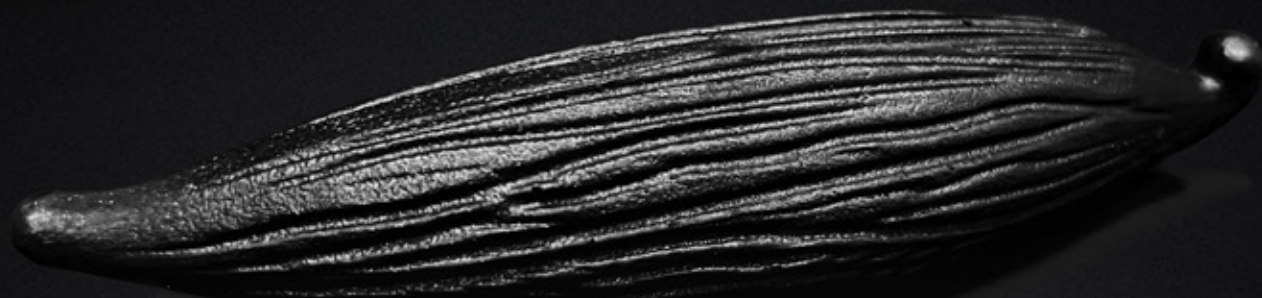
**MOF Chocolatier 2018**  
**Vice World Champion**

**Artistic Director**

**Collaboration DECOTATOO X EVO STUDIO**

# TAHAA VANILLA

BY ALAIN ABEL



VANILLA

Ref : SL-VNL

Contains 6 Moulds & 1 Cutter



VANILLA SILICONE MOULD  
15 x 3.8 x 3.5 cm



VANILLA CUTTER  
7.9 x 2.9 x 2.3 cm  
Only wash with soap & cold water

Signature by  
**PAUL OCCHIPINTI**  
MEILLEUR OUVRIER DE FRANCE



Withstand heat temperature up to 250° C  
and cold temperature - 40° C.

# ORIGIN



ORIGIN  
**AFTERNOON TEA**  
Ref: SL-ORGAFT

Contains 12 Set Moulds & 1 Cutter

ORIGIN (MEDIUM)  
Ref: SL-ORG2

Contains 3 Set Moulds & 1 Cutter



ORIGIN (BIG)  
Ref: SL-ORG3

Contains 1 Set Mould & 1 Cutter

ORIGIN (SMALL)  
Ref: SL-ORG

Contains 5 Set Moulds & 1 Cutter



**ORIGIN SILICONE MOULD**  
(Afternoon Tea) 8.1 x 3.6 x 3 cm  
(Small) 12.4 x 6 x 4.7 cm  
(Medium) 15.5 x 7.5 x 5.9 cm  
(Big) 22.9 x 11 x 8.6 cm



**ORIGIN CUTTER**  
(Afternoon Tea) 6 x 3.1 x 2.3 cm  
(Small) 8.6 x 4.3 x 2.3 cm  
(Medium) 10.6 x 5.3 x 2.3 cm  
(Big) 15.3 x 7.5 x 2.3 cm

Only wash with soap & cold water

Signature by  
**PAUL OCCHIPINTI**  
MEILLEUR OUVRIER DE FRANCE



Withstand heat temperature up to 250° C and cold temperature - 40° C.

# MILLE FEUILLES



MILLE FEUILLE  
Ref : SL-MLFL

Contains 8 Moulds & 1 Cutter



MILLE FEUILLES SILICONE MOULD  
8.4 x 8.4 x 2.8 cm



MILLE FEUILLES CUTTER  
7.3 x 7.3 x 2.3 cm  
Only wash with soap & cold water

Signature by  
**PAUL OCCHIPINTI**  
MEILLEUR OUVRIER DE FRANCE



Withstand heat temperature up to 250° C  
and cold temperature - 40° C.

# MISS CHARLOTTE



MISS CHARLOTTE  
AFTERNOON TEA  
Ref: SL-MCHAFT

Contains 10 Moulds & 1 Cutter



MISS CHARLOTTE  
Ref: SL-MCH

Contains 5 Moulds & 1 Cutter



MISS CHARLOTTE SILICONE MOULD  
(Afternoon Tea) 5.1 x 5.1 x 3.2 cm  
(Regular) 8.1 x 8.1 x 5 cm



MISS CHARLOTTE CUTTER  
(Afternoon Tea) 3.5 x 3.5 x 2.3 cm  
(Regular) 4.9 x 4.9 x 2.3 cm  
Only wash with soap & cold water

Signature by  
PAUL OCCHIPINTI  
MEILLEUR OUVRIER DE FRANCE 

Withstand heat temperature up to 250° C  
and cold temperature - 40° C.

# SIGNATURE



SIGNATURE  
Ref: SL-SGN

Contains 6 Moulds & 1 Cutter



SIGNATURE SILICONE MOULD  
6.9 x 6.9 x 4.7 cm



SIGNATURE CUTTER  
5.47 x 5.47 x 2.3 cm  
Only wash with soap & cold water

Signature by  
PAUL OCCHIPINTI  
MEILLEUR OUVRIER DE FRANCE



Withstand heat temperature up to 250° C  
and cold temperature - 40° C.

# TIRAMISU



TIRAMISU  
Ref: SL-TRM

Contains 5 Moulds & 1 Cutter



TIRAMISU SILICONE MOULD  
8.1 x 8.1 x 5.8 cm



TIRAMISU CUTTER  
6.7 x 6.7 x 2.3 cm  
Only wash with soap & cold water

Signature by  
**PAUL OCCHIPINTI**  
MEILLEUR OUVRIER DE FRANCE



Withstand heat temperature up to 250° C  
and cold temperature - 40° C.



# QUENELLE



QUENELLE  
AFTERNOON TEA

Ref: SL-QNLARFT

Contains 14 Moulds & 1 Cutter



QUENELLE  
Ref: SL-QNL

Contains 5 Moulds & 1 Cutter



QUENELLE SILICONE MOULD  
(Afternoon Tea) 4.1 x 4.1 x 4.2 cm  
(Regular) 6.8 x 6.6 x 6.5 cm



QUENELLE CUTTER  
(Afternoon Tea) 3.3 x 3.3 x 2.3 cm  
(Regular) 5.1 x 5.1 x 2.3 cm  
Only wash with soap & cold water

Signature by  
PAUL OCCHIPINTI  
MEILLEUR OUVRIER DE FRANCE



Withstand heat temperature up to 250° C  
and cold temperature - 40° C.

# MARGUERITE



MARGUERITE AFTERNOON TEA  
Ref : SL-MRGS

Contains 12 Set Moulds & 1 Cutter

MARGUERITE INDIVIDUAL  
Ref : SL-MRGM

Contains 6 Set Moulds & 1 Cutter

MARGUERITE ENTREMETS  
Ref : SL-MRGL

Contains 1 Set Mould & 1 Cutter



MARGUERITE SILICONE MOULD  
(Afternoon Tea) 5.5 x 5.5 x 2.4 cm  
(Individual) 8.4 x 8.4 x 3.2 cm  
(Entremets) 18.5 x 18.5 x 5.6 cm



MARGUERITE CUTTER  
(Afternoon Tea) 4.2 x 4.2 x 2.3 cm  
(Individual) 6.4 x 6.4 x 2.3 cm  
(Entremets) 13.8 x 13.8 x 2.3 cm  
**Only wash with soap & cold water**

Signature by  
PAUL OCCHIPINTI  
MEILLEUR OUVRIER DE FRANCE



Withstand heat temperature up to 250° C  
and cold temperature - 40° C.

# CENTIFOGLIA



**CENTIFOGLIA**  
Ref : SL-CNT

**Contains 6 Moulds & 1 Cutter**



**CENTIFOGLIA SILICONE MOULD**  
8.9 x 8.9 x 3.6 cm



**CENTIFOGLIA CUTTER**  
7.8 x 7.8 x 2.3 cm  
Only wash with soap & cold water

*Signature by*  
**PAUL OCCHIPINTI**  
MEILLEUR OUVRIER DE FRANCE



Withstand heat temperature up to 250° C  
and cold temperature - 40° C.

# TED-Y'S

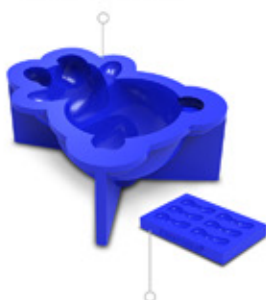


TED-Y'S  
Ref: SL-TDY

Contains 6 Set Moulds & 1 Cutter



TED-Y'S SILICONE MOULD  
9.1 x 7.2 x 3.7 cm



TED-Y'S BOW TIE SILICONE MOULD  
5.5 x 3.6 x 0.6 cm



TED-Y'S CUTTER  
8 x 5.4 x 1.3 cm

Only wash with soap & cold water

Signature by  
PAUL OCCHIPINTI  
MEILLEUR OUVRIER DE FRANCE



Withstand heat temperature up to 250° C  
and cold temperature - 40° C.

*Signature by*  
**GABRIEL LE QUANG**  
MEILLEUR OUVRIER DE FRANCE



**MOF Patissier 2023**  
**Europe Champion Sugar Artistic**

# OXO



OXO  
AFTERNOON TEA

Ref : SL-OQAFT

Contains 12 Moulds & 1 Cutter



OXO  
Ref : SL-OQ

Contains 5 Moulds & 1 Cutter



OXO SILICONE MOULD  
(Afternoon Tea) 5 x 5 x 3 cm  
(Regular) 8 x 8 x 4.6 cm



OXO CUTTER  
(Afternoon Tea) 3.7 x 3.7 x 2.3 cm  
(Regular) 5.2 x 5.2 x 2.3 cm  
Only wash with soap & cold water

Signature by  
GABRIEL LE QUANG  
MEILLEUR OUVRIER DE FRANCE

Withstand heat temperature up to 250° C  
and cold temperature - 40° C.

# QUENELLE CLASSIC



QUENELLE CLASSIC AFTERNOON TEA  
Ref: SL-QNCLAF  
Contains 12 Moulds & 1 Cutter

QUENELLE CLASSIC REGULAR  
Ref: SL-QNCLRG  
Contains 6 Moulds & 1 Cutter



QUENELLE CLASSIC SILICONE MOULD  
(Afternoon) 6 x 3.5 x 3.1 cm  
(Regular) 9.5 x 5.6 x 5 cm



QUENELLE CLASSIC CUTTER  
(Afternoon Tea) 2.3 x 3.3 x 2.3 cm  
(Regular) 3.4 x 5 x 2.3 cm  
Only wash with soap & cold water

Signature by  
GABRIEL LE QUANG  
MEILLEUR OUVRIER DE FRANCE



Withstand heat temperature up to 250° C  
and cold temperature - 40° C.

# AMPHORA



AMPHORA  
Ref: SL-AMP

Contains 6 Moulds & 1 Cutter



AMPHORA SILICONE MOULD  
6.9 x 6.9 x 6 cm



AMPHORA CUTTER  
4.5 x 4.5 x 2.3 cm  
Only wash with soap & cold water

Signature by  
**GABRIEL LE QUANG**  
MEILLEUR OUVRIER DE FRANCE

Withstand heat temperature up to 250° C  
and cold temperature - 40° C.



# DÉOVA



DÉOVA  
Ref: SL-DV

Contains 1 Mould & 1 Cutter



DÉOVA SILICONE MOULD  
16.6 x 16.6 x 5.8 cm



DÉOVA CUTTER  
13.4 x 13.4 x 2.3 cm  
Only wash with soap & cold water

Signature by  
GABRIEL LE QUANG  
MEILLEUR OUVRIER DE FRANCE

Withstand heat temperature up to 250° C  
and cold temperature - 40° C.

# VAL O RIS



VAL O RIS  
Ref: SL-VOR

Contains 1 Mould,  
1 Support & 1 Cutter



VAL O RIS SILICONE MOULD  
25.3 x 7.9 x 5.8 cm



VAL O RIS SUPPORT  
25.9 x 8.5 x 3.3 cm



VAL O RIS CUTTER  
22.5 x 5.2 x 2.3 cm

Only wash with soap & cold water

Signature by  
GABRIEL LE QUANG  
MEILLEUR OUVRIER DE FRANCE

Withstand heat temperature up to 250° C  
and cold temperature - 40° C.

*Signature by*  
**DAVID ALVES**

MEILLEUR OUVRIER DE FRANCE

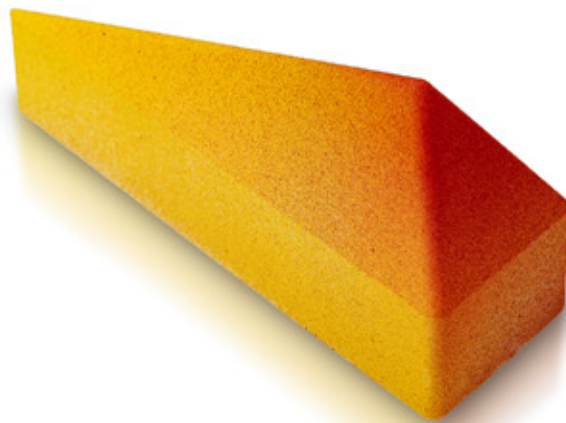


**MOF Glacier**  
**2023**

# PRISM

NEW  
PRODUCTS

V2



PRISM AFTERNOON TEA  
Ref: SL-PRSAFT

Contains 12 Moulds & 1 Cutter

PRISM REGULAR  
Ref: SL-PRSRG

Contains 6 Moulds & 1 Cutter



PRISM SILICONE MOULD  
(Afternoon Tea) 3.1 x 9.1 x 4.1 cm  
(Regular) 4.5 x 13.4 x 6.1 cm



PRISM CUTTER  
(Afternoon Tea) 3.7 x 11.3 x 2.3 cm  
(Regular) 5.2 x 15.8 x 2.3 cm

Only wash with soap & cold water

Signature by  
DAVID ALVES  
MEILLEUR OUVRIER DE FRANCE

Withstand heat temperature up to 250° C  
and cold temperature - 40° C.

# ESQUIMO BARGUETTA



ESQUIMO BARGUETTA REGULAR  
Ref: SL-ESQM  
Contains 8 Moulds & 1 Cutter



ESQUIMO BARGUETTA SILICONE MOULD  
5.4 x 9.9 x 2.9 cm



ESQUIMO BARGUETTA CUTTER  
5.8 x 10.3 x 2.3 cm  
Only wash with soap & cold water

Signature by  
DAVID ALVES  
MEILLEUR OUVRIER DE FRANCE



Withstand heat temperature up to 250° C  
and cold temperature - 40° C.

*Signature by*  
**ROULLARD PIERRE HENRI**  
MEILLEUR OUVRIER DE FRANCE



**MOF Pâtissier 2023**

# TYPHOON



**TYPHOON**  
Ref : SL-TYP  
Contains 6 Moulds & 1 Cutter

**TYPHOON LARGE**  
Ref : SL-TYPLG  
Contains 1 Mould & 1 Cutter



**TYPHOON SILICONE MOULD**  
(Regular) 8 x 8 x 3.2 cm  
(Large) 16 x 16 x 6.4 cm



**TYPHOON CUTTER**  
(Regular) 6.7 x 6.7 x 2.3 cm  
(Large) 12 x 12 x 2.3 cm

Only wash with soap & cold water

Signature by  
**ROULLARD PIERRE HENRI**  
MEILLEUR OUVRIER DE FRANCE 

Withstand heat temperature up to 250° C  
and cold temperature - 40° C.

# TOURBILLION

NEW  
PRODUCTS

V2



TOURBILLION  
Ref: SL-TTYP

Contains 5 Moulds & 1 Cutter



TOURBILLION SILICONE MOULD  
7.5 x 7.5 x 1.9 cm



TOURBILLION CUTTER  
7 x 7 x 2.3 cm

Only wash with soap & cold water

Signature by  
ROULLARD PIERRE HENRI  
MEILLEUR OUVRIER DE FRANCE

Withstand heat temperature up to 250° C  
and cold temperature - 40° C.



*Signature by*  
**PIERRE JEAN QUINONERO**  
EXECUTIVE PASTRY CHEF



Champion de France du Dessert  
2021

# VERSAILLE



**VERSAILLE AFTERNOON TEA**  
Ref: SL-VERSAFT  
Contains 12 Moulds & 1 Cutter

**VERSAILLE REGULAR**  
Ref: SL-VERSRG  
Contains 6 Moulds & 1 Cutter



**VERSAILLE SILICONE MOULD**  
(Afternoon Tea) 4.6 x 4.6 x 3 cm  
(Regular) 6.7 x 6.7 x 4.3 cm



**VERSAILLE CUTTER**  
(Afternoon Tea) 4 x 4 x 2.3 cm  
(Regular) 6.1 x 6.1 x 2.3 cm

Only wash with soap & cold water

*Signature by*  
**PIERRE JEAN QUINONERO**  
EXECUTIVE PASTRY CHEF

Withstand heat temperature up to 250° C  
and cold temperature - 40° C.

# LE POUF



**LE POUF AFTERNOON TEA**  
Ref: SL-LPFAFT  
Contains 12 Moulds & 1 Cutter

**LE POUF REGULAR**  
Ref: SL-LPFRG  
Contains 6 Moulds & 1 Cutter



**LE POUF SILICONE MOULD**  
(Afternoon Tea) 4.8 x 4.8 x 2.8 cm  
(Regular) 7.1 x 7.1 x 4.1 cm



**LE POUF CUTTER**  
(Afternoon Tea) 2.9 x 2.9 x 2.3 cm  
(Regular) 4 x 4 x 2.3 cm

Only wash with soap & cold water

*Signature by*  
**PIERRE JEAN QUINONERO**  
EXECUTIVE PASTRY CHEF

Withstand heat temperature up to 250° C  
and cold temperature - 40° C.

*Signature by*  
**MATHIEU ANSQUER**  
EXECUTIVE PASTRY CHEF



Pâtisserie Celine - Nice cote d'azur

# TARTE FRAISE



TARTE FRAISE  
Ref : SL-STWB

Contains 8 Moulds & 1 Cutter



TARTE FRAISE SILICONE MOULD  
7.8 x 7.8 x 2 cm



TARTE FRAISE CUTTER  
7 x 7 x 2.3 cm  
Only wash with soap & cold water

Signature by  
**MATHIEU ANSQUER**  
EXECUTIVE PASTRY CHEF

Withstand heat temperature up to 250° C  
and cold temperature - 40° C.

*Signature by*  
**JULIEN PERRINET**  
EXECUTIVE PASTRY CHEF



The Best Chef Awards  
2019

# EVASIVE



**EVASIVE AFTERNOON TEA**  
Ref: SL-EVSAFT  
Contains 12 Moulds & 1 Cutter

**EVASICE REGULAR**  
Ref: SL-EVSRG  
Contains 6 Moulds & 1 Cutter



**EVASIVE SILICONE MOULD**  
(Afternoon Tea) 4.8 x 4.8 x 3.4 cm  
(Regular) 7 x 7 x 5 cm



**EVASIVE CUTTER**  
(Afternoon Tea) 3.7 x 3.7 x 2.3 cm  
(Regular) 5.2 x 5.2 x 2.3 cm  
Only wash with soap & cold water

*Signature by*  
**JULIEN PERRINET**  
EXECUTIVE PASTRY CHEF

Withstand heat temperature up to 250° C  
and cold temperature - 40° C.

# TART SHELL

NEW  
PRODUCTS

V2



TART SHELL AFTERNOON TEA  
Ref: SL-TRTAFT

Contains 12 Moulds & 1 Cutter

TART SHELL REGULAR  
Ref: SL-TRTRG

Contains 8 Moulds & 1 Cutter

TART SHELL LARGE  
Ref: SL-TRTLG

Contains 1 Moulds & 1 Cutter



TART SHELL SILICONE MOULD  
(Afternoon Tea) 4.5 x 4.5 x 1.6 cm  
(Regular) 7.5 x 7.5 x 2.2 cm  
(Large) 12.5 x 12.5 x 2.8 cm



TART SHELL CUTTER  
(Afternoon Tea) 4.4 x 4.4 x 1.3 cm  
(Regular) 7 x 7 x 2.3 cm  
(Large) 11.4 x 11.4 x 2.3 cm

Only wash with soap & cold water

Signature by  
**JULIEN PERRINET**  
EXECUTIVE PASTRY CHEF

Withstand heat temperature up to 250° C  
and cold temperature - 40° C.



*Signature by*  
**BARBOT MAXENCE**  
EXECUTIVE PASTRY CHEF



Winner of The Olympiades des  
Métiers

# DAME JEANNE



**DAME JEANNE REGULAR**  
Ref: SL-DAMJREG  
Contains 8 Moulds & 1 Cutter

**DAME JEANNE AFTERNOON TEA**  
Ref: SL-DAMJAFT  
Contains 14 Moulds & 1 Cutter



**DAME JEANNE SILICONE MOULD**  
(Afternoon Tea) 4 x 4 x 5 cm  
(Regular) 6 x 6 x 7 cm



**DAME JEANNE CUTTER**  
(Afternoon Tea) 3 x 3 x 2.3 cm  
(Regular) 4 x 4 x 2.3 cm  
Only wash with soap & cold water

*Signature by*  
**BARBOT MAXENCE**  
EXECUTIVE PASTRY CHEF

Withstand heat temperature up to 250° C  
and cold temperature - 40° C.

# COEUR NOISETTE



**COEUR NOISETTE AFTERNOON TEA**  
**Ref: SL-CHAZEFT**  
**Contains 10 Moulds & 1 Cutter**

**COEUR NOISETTE REGULAR**  
**Ref: SL-CHAZEREG**  
**Contains 6 Moulds & 1 Cutter**



**COEUR NOISETTE SILICONE MOULD**  
(Afternoon Tea) 5,2 x 5,2 x 3,2 cm  
(Regular) 7,5 x 7,5 x 4,6 cm



**COEUR NOISETTE CUTTER**  
(Afternoon Tea) 2,7 x 3,5 x 2,3 cm  
(Regular) 3,7 x 4,8 x 2,3 cm  
**Only wash with soap & cold water**

*Signature by*  
**BARBOT MAXENCE**  
EXECUTIVE PASTRY CHEF

Withstand heat temperature up to 250° C  
and cold temperature - 40° C.

# BISOUS



**BISOUS AFTERNOON TEA**  
Ref: SL-BSOFT  
Contains 12 Moulds & 1 Cutter

**BISOUS REGULAR**  
Ref: SL-BSORG  
Contains 8 Moulds & 1 Cutter



**BISOUS SILICONE MOULD**  
(Afternoon Tea) 7 x 4.1 x 2.5 cm  
(Regular) 10 x 6 x 3.6 cm



**BISOUS CUTTER**  
(Afternoon Tea) 2.5 x 5 x 1.7 cm  
(Regular) 3.3 x 7.1 x 2.3 cm  
Only wash with soap & cold water

*Signature by*  
**BARBOT MAXENCE**  
EXECUTIVE PASTRY CHEF

Withstand heat temperature up to 250° C  
and cold temperature - 40° C.

*Signature by*  
**LOK HIN YAM**  
EXECUTIVE PASTRY CHEF



Winner of Silver Award  
C3 Chocolate Competition  
2017

# POMPOM



**POMPOM AFTERNOON TEA**  
Ref: SL-CHTA  
Contains 12 Moulds & 1 Cutter

**POMPOM REGULAR**  
Ref: SL-CHTR  
Contains 6 Moulds & 1 Cutter



**POMPOM SILICONE MOULD**  
(Afternoon Tea) 4.6 x 4.6 x 1 cm  
(Regular) 6.8 x 6.8 x 6 cm



**POMPOM CUTTER**  
(Afternoon Tea) 4.2 x 4.2 x 2.3 cm  
(Regular) 4.8 x 4.8 x 2.3 cm

Only wash with soap & cold water

Signature by  
**LOK HIN YAM**  
EXECUTIVE PASTRY CHEF

Withstand heat temperature up to 250° C  
and cold temperature - 40° C.

*Signature by*  
**CHRISTOPHE DEVOILLE**  
PASTRY CHEF OF THE YEAR  
2023-2024



Executive Pastry Chef

# DATE



DATE  
Ref: SL-DT

Contains 6 Moulds & 1 Cutter



DATE SILICONE MOULD  
9.6 x 5.2 x 5.2 cm



DATE CUTTER  
6.5 x 4.5 x 2.3 cm  
Only wash with soap & cold water

Signature by  
**CHRISTOPHE DEVOILLE**  
PASTRY CHEF OF THE YEAR  
2023-2024

Withstand heat temperature up to 250° C  
and cold temperature - 40° C.



# QUENELLE CURVE



QUENELLE CURVE AFTERNOON TEA  
Ref: SL-QNCAFT  
Contains 10 Moulds & 1 Cutter

QUENELLE CURVE REGULAR  
Ref: SL-QNCRG  
Contains 6 Moulds & 1 Cutter



QUENELLE CURVE SILICONE MOULD  
(Afternoon Tea) 5.2 x 6.3 x 2.4 cm  
(Regular) 7.6 x 9.2 x 3.5 cm



QUENELLE CURVE CUTTER  
(Afternoon Tea) 4.1 x 4.7 x 1.8 cm  
(Regular) 5.7 x 6.7 x 2.3 cm  
Only wash with soap & cold water

Signature by  
**CHRISTOPHE DEVOILLE**  
PASTRY CHEF OF THE YEAR  
2023-2024

Withstand heat temperature up to 250° C  
and cold temperature - 40° C.

*Signature by*  
**YUSUKE AOKI**  
INTERNATIONAL PASTRY CHEF



International Consultant  
Tokyo

# MONT BLANC



**MONT BLANC AFTERNOON TEA**  
Ref: **SL-MBAFT**  
Contains 11 Moulds & 1 Cutter

**MONT BLANC REGULAR**  
Ref: **SL-MBRG**  
Contains 6 Moulds & 1 Cutter



**MONT BLANC SILICONE MOULD**  
(Afternoon Tea) 11 x 3.2 x 2.4 cm  
(Regular) 16 x 4.7 x 3.6 cm



**MONT BLANC CUTTER**  
(Afternoon Tea) 10 x 2.7 x 2.3 cm  
(Regular) 7 x 2 x 2.3 cm

Only wash with soap & cold water

*Signature by*  
**YUSUKE AOKI**  
INTERNATIONAL PASTRY CHEF

Withstand heat temperature up to 250° C  
and cold temperature - 40° C.

# KIKU FLOWER

NEW  
PRODUCTS

V2



**KIKU FLOWER AFTERNOON TEA**  
Ref: SL-KFAFT  
Contains 10 Moulds & 1 Cutter

**KIKU FLOWER REGULAR**  
Ref: SL-KFRG  
Contains 5 Moulds & 1 Cutter



**KIKU FLOWER SILICONE MOULD**  
(Afternoon Tea) 5.4 x 5.4 x 2.7 cm  
(Regular) 7.9 x 7.9 x 3.9 cm



**KIKU FLOWER CUTTER**  
(Afternoon Tea) 3.7 x 3.7 x 2.3 cm  
(Regular) 5.2 x 5.2 x 2.3 cm  
Only wash with soap & cold water

*Signature by*  
**YUSUKE AOKI**  
INTERNATIONAL PASTRY CHEF

Withstand heat temperature up to 250° C  
and cold temperature - 40° C.

*Signature by*  
**MARIO RAGONA**  
EXECUTIVE PASTRY CHEF



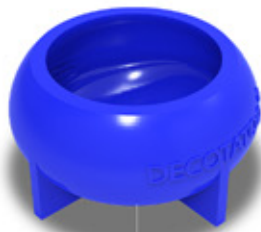
Director of The High Pastry School  
Tuscany, Italy

# EMOLCE



EMOLCE  
Ref: SL-EMC

Contains 6 Moulds & 1 Cutter



EMOLCE SILICONE MOULD  
7.5 x 7.5 x 4 cm



EMOLCE CUTTER  
6 x 6 x 2.3 cm  
Only wash with soap & cold water

Signature by  
**MARIO RAGONA**  
EXECUTIVE PASTRY CHEF

Withstand heat temperature up to 250° C  
and cold temperature - 40° C.

# OCTAGONE



**OCTAGONE AFTERNOON TEA**  
Ref: SL-EXGAFT  
Contains 12 Moulds & 1 Cutter

**OCTAGONE REGULAR**  
Ref: SL-EXGRG  
Contains 8 Moulds & 1 Cutter

**OCTAGONE LARGE**  
Ref: SL-EXGLG  
Contains 1 Moulds & 1 Cutter



**OCTAGONE SILICONE MOULD**  
(Afternoon Tea) 5.4 x 5.4 x 2.3 cm  
(Regular) 7.9 x 7.9 x 3.4 cm  
(Large) 16 x 16 x 6.9 cm



**OCTAGONE CUTTER**  
(Afternoon Tea) 3.9 x 3.9 x 2.3 cm  
(Regular) 5.5 x 5.5 x 2.3 cm  
(Large) 10.6 x 10.6 x 2.3 cm

Only wash with soap & cold water

*Signature by*  
**MARIO RAGONA**  
EXECUTIVE PASTRY CHEF

Withstand heat temperature up to 250° C  
and cold temperature - 40° C.

*Signature by*  
**JORDAN GASCO**  
BEST PASTRY CHEF  
2023





# ST. HONORE



**ST. HONORE**  
**Ref: SL-STHNR**  
**Contains 8 Mould & 1 Cutter**



**ST. HONORE SILICONE MOULD**  
8 x 8 x 2.7 cm



**ST. HONORE CUTTER**  
7.3 x 7.3 x 2.3 cm  
**Only wash with soap & cold water**

*Signature by*  
**JORDAN GASCO**  
BEST PASTRY CHEF  
2023

Withstand heat temperature up to 250° C  
and cold temperature - 40° C.

*Signature by*  
**KENTA NAKANO**



**Executive Pastry Chef**  
**Japan**

# SAKURA



**SAKURA AFTERNOON TEA**  
Ref: SL-SKUAFT  
Contains 12 Moulds & 1 Cutter

**SAKURA REGULAR**  
Ref: SL-SKURG  
Contains 6 Moulds & 1 Cutter



**SAKURA SILICONE MOULD**  
(Afternoon Tea) 7.2 x 7.2 x 4 cm  
(Regular) 5 x 5 x 2.8 cm



**SAKURA CUTTER**  
(Afternoon Tea) 4 x 4 x 2.3 cm  
(Regular) 5.6 x 5.6 x 2.3 cm

Only wash with soap & cold water

*Signature by*  
**KENTA NAKANO**  
EXECUTIVE PASTRY CHEF

Withstand heat temperature up to 250° C  
and cold temperature - 40° C.

# MACARON



MACARON  
AFTERNOON TEA

Ref : SL-MCRAFT

Contains 12 Moulds & 1 Cutter



MACARON  
Ref : SL-MCR

Contains 6 Moulds & 1 Cutter



MACARON SILICONE MOULD  
(Afternoon Tea) 4.6 x 4.6 x 2.8 cm  
(Regular) 6.5 x 6.5 x 4 cm



MACARON CUTTER  
(Afternoon Tea) 4.4 x 4.4 x 2.3 cm  
(Regular) 6.2 x 6.2 x 2.3 cm

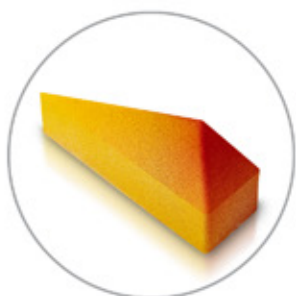
Only wash with soap & cold water

Signature by  
**KENTA NAKANO**  
EXECUTIVE PASTRY CHEF

Withstand heat temperature up to 250° C  
and cold temperature - 40° C.

# AFTERNOON TEA COLLECTIONS

NEW  
PRODUCTS  
V2



DECOTATOO®  
*Keep Your Life Creative!*

CLASSIC



MUST HAVE

# NOISETTE



NOISETTE  
Ref: SL-NST

Contains 6 Moulds & 1 Cutter



NOISETTE SILICONE MOULD  
14.7 x 4.2 x 3.9 cm



NOISETTE FINGER CUTTER  
12.3 x 1.8 x 2.3 cm  
Only wash with soap & cold water

DECOTATOO®  
COLLECTIONS

Withstand heat temperature up to 250° C  
and cold temperature - 40° C.

Contact Us to  
**Personalize Your Own Mould**

[www.deco-tattoo.com](http://www.deco-tattoo.com)